

Installation Guide for Ambi-Click Dry Verge

Step by step guide for the following Ambi Dry Verge, for a quick and simple verge system:

Ambi Dry Verge

Black KR9780-5-0450

Grey KR9780-5-0429

Brown KR9780-5-0247

Related products:

- Eave and Ridge Pack
Black KR9781-5-0450
Grey KR9781-5-0429
Brown KR9781-5-0247

- Half Round Ridge End Cap
Black KR977276
Grey KR977230
Brown KR977236

- Universal Angle Ridge End Cap
Black KR977376
Grey KR977330
Brown KR977336

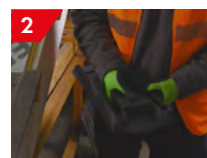
Please note:

- No special tools are required to install.
- No mortar required.
- Supports installation with most concrete interlocking tile
- This system supports compliance with BS 8612 for Dry Fix Performance and BS 5534 for Installation and Mechanical Performance

Ambi Dry Verge installation guide



Extend the tiling batten -Once the roof has been felted, you will need to install the tiling battens, ensuring they are extended 35mm beyond the gable wall, barge board or render. This will allow for screw fixing the verge.



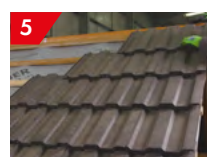
Fix the eaves closure -Next, you will need to fix the Eaves starter. Establish the position of the starter unit by making a mark by positioning it inside a verge unit and placing it in position, flat on top of the tile. Now remove the eaves starter prior to fixing.



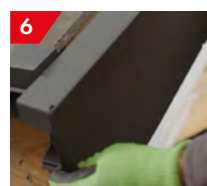
The eaves starter unit should be twice fixed to the end of the fascia board, brickwork or timber tilt fillet.



An additional batten behind the fascia board can also be used if required to ensure a suitable fixing point - this should be securely fixed to the rafters.



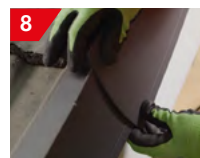
The roof is now ready for tiling in the normal way, ensuring the tiles finish flush with the end of the batten.



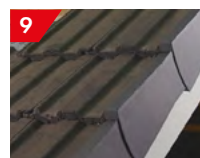
Fit the first verge section making sure that it is located firmly onto the eaves starter.



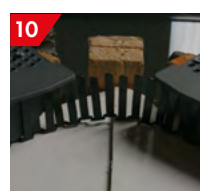
Once in position the verge unit can be screw fixed into the end of the batten using 40 x 3.5mm stainless steel screws.



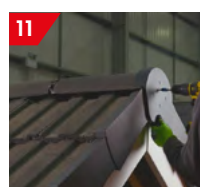
The second verge can easily be positioned by locating the front edge of the verge over the two notches on the installed verge, and sliding up until it meets the leading edge of the tile.



This process can now be repeated, ensuring each verge unit engages with the one below, so a verge unit covers the end of every course of tiles.



Insert Ridge Closer into the last unit - When we reach the top or apex of the roof, we can close this area off by using the ridge comb that is supplied as part of the eave and ridge kit. The teeth of the comb sit over the bottom edge of the verge unit where it will be held in place. If using a dry ridge system the ridge roll can be extended over, tucked back up and stuck to the underside to offer additional protection.



To finish, screw fix the Ridge End Cap to the ridge batten, securing it in place and completing the Ambi Dry Verge system. The ridge system will need to be installed prior to fixing this. If required a small slot can easily be made on each side of the end cap so it sits over the upstand of the verge unit.

Retro Fit

If dry verge units are to be fitted to existing buildings all of the old undercloak and mortar bedding should be removed prior to fixing. Battens can either be replaced or an additional timber batten can be installed running from the eave to ridge, this batten should extend 35mm over the barge board or brick work/render for the units to fix into, as shown in step 1. Any additional battens must be securely fixed.